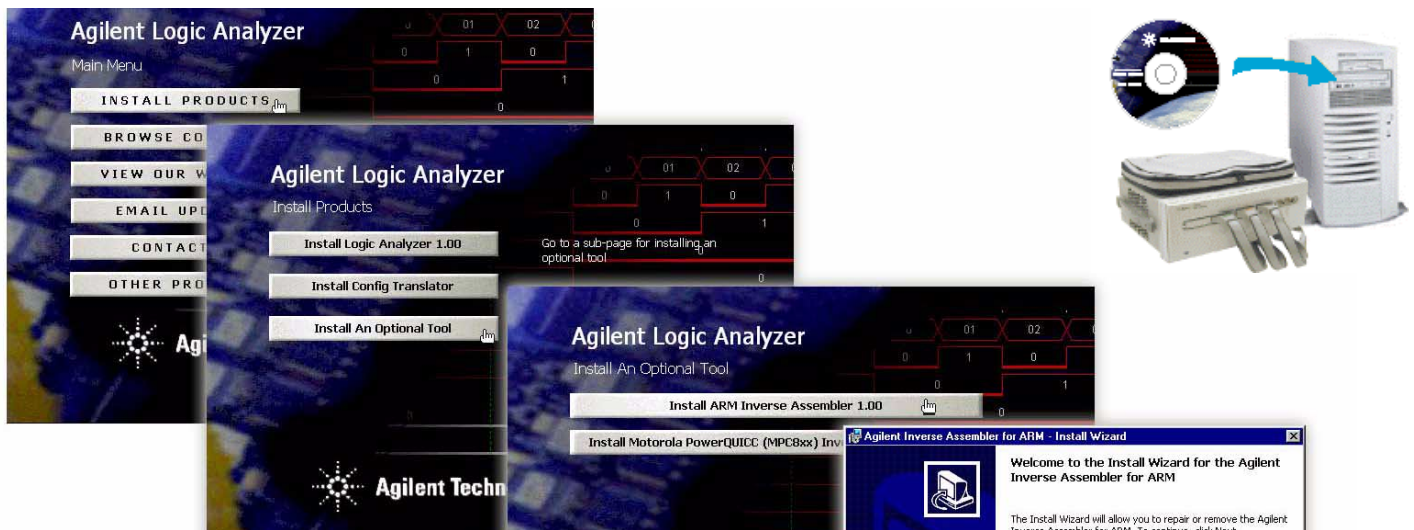


Inverse Assemblers

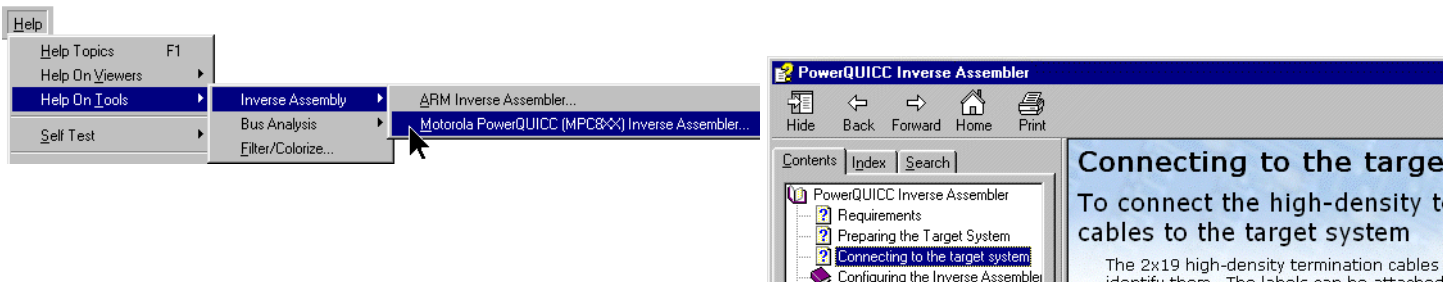
for 1680/90 -Series Logic Analyzers

This note describes how to install the inverse assembler on an Agilent 1680/90-series logic analyzer. If you have an Agilent 1670-series, 16500-series, or 16700-series logic analysis system, refer to the manual for instructions.

- 1 Check that your target system meets the requirements listed in the manual. For most inverse assemblers, the logic analyzer can be connected to an analysis probe or to connectors built into your target system.
- 2 Install the inverse assembler on your 1680/1690-series logic analyzer.



- 3 Install the license for the inverse assembler. Follow the instructions on the certificate. For more information, go to the Index tab in the online help and click "license."
- 4 Follow the instructions in the online help to connect the logic analyzer probes to the analysis probe or to your target system.



- 5 See the online help for information on using the inverse assembler. *The inverse assembler information in the manual applies to other logic analyzers.*

Manual Part Number 01680-92001 July 2001 Printed in U.S.A.

